

## 2/7 Opoia Road Hamilton East

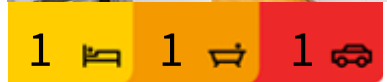
### Location & Easy Care!

**SORRY THIS UNIT HAS SOLD.**

This cute ground floor unit, is yes, absolutely gorgeous and for ease of living is sunny, has parking outside your front door, located in one of the best streets in Hamilton with million dollar homes for neighbours, is across the river from the CBD, you can walk to work and it's very central to everything in Hamilton!

Move in ready with new carpet, LED lights, neutral paint work throughout, warm suspended ceilings all done in June 2018.

RV of \$250,000 and latest rental appraisal of \$270 - \$300 per week this 1970's property makes a great investment for only \$250,000!



**FOR SALE**

Sold

**VIEW**

[pinnacle.ljhooker.co.nz/1X5HQS](https://pinnacle.ljhooker.co.nz/1X5HQS)

**CONTACT**

Lynda Lee 021 309 216

**LJ HOOKER PINNACLE | ROYAL OAK**

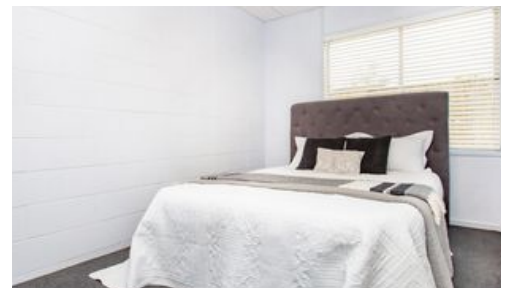
(09) 625 8007

To receive the full information pack contact me, Lynda lee on 021 309 216, lyndalee.hamilton@ljhp.nz or visit my website www.lyndalee.co.nz

## More About this Property

|                      |   |
|----------------------|---|
| <b>PROPERTY ID</b>   | 1X5HQS  |
| <b>PROPERTY TYPE</b> | Residential   |
| <b>HOUSE SIZE</b>    | 50.00 m <sup>2</sup>  |
| <b>INCLUDING</b>     | Built-In Wardrobes, Close to Schools, Close to Shops, Close to Transport, Location! |

Licensed Real Estate Agents (REAA2008)



## LJ Hooker Pinnacle | Royal Oak - Real Estate Associates Ltd

CONTACT: Lynda Lee  
EMAIL: lyndalee.hamilton@ljhp.nz  
MOBILE: 021 309 216  
PHONE: (09) 625 8007  
FAX: (09) 625 7512

### DISCLAIMER

The above information has been furnished to us by the Vendor. We have not verified whether or not that information is accurate and do not have any belief one way or the other in its accuracy. We do not accept any responsibility to any person for its accuracy and do no more than pass it on. All interested parties should make and rely upon their own enquiries in order to determine whether or not this information is in fact accurate.